

The Scanjet RSB-100A is a Retractable Spray Ball that is Pneumatically driven for actuation to a prescribed location within a structure for cleaning.

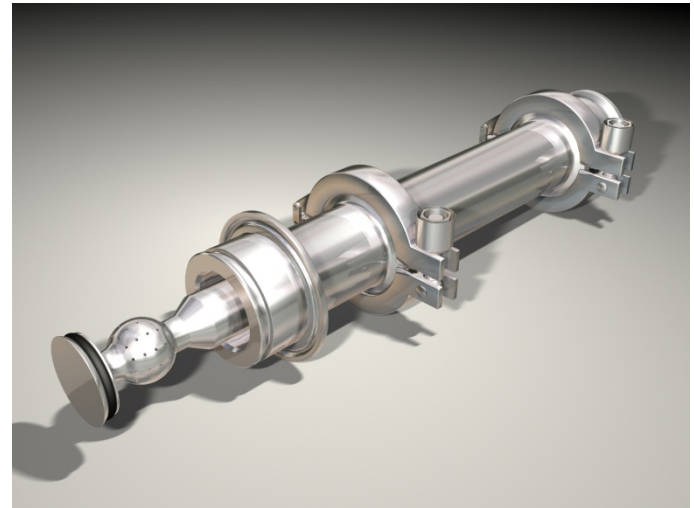
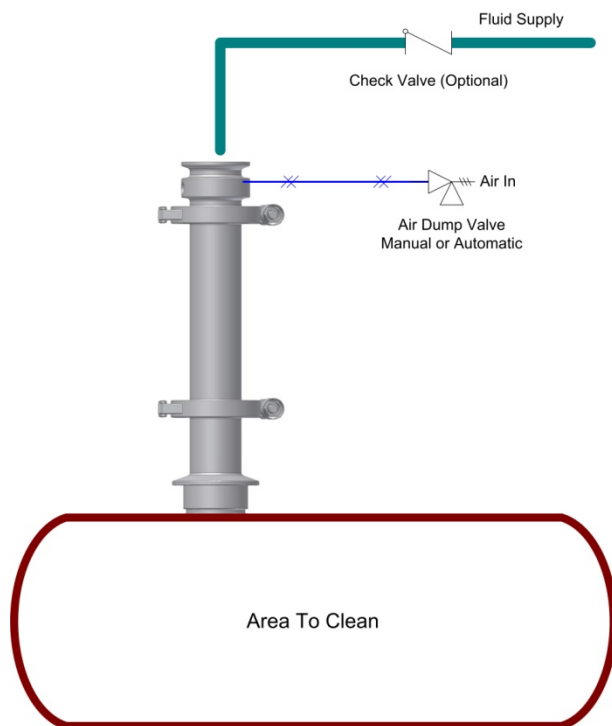
Applications:

- Ventilation Ducting
- Ribbon Blenders
- Tablet Making Equipment
- Air Drying Equipment
- Ducting & Vent Lines
- Powder Handling Systems
- Dryers & Cyclones
- Reactors

Benefits:

- Self-draining
- Targeted Spray Patterns
- Custom lengths available for position optimization
- Out of process way
- 100% CIP design (self-cleaning)
- Pneumatic actuation with mechanical closure

Installation Requirements:



GENERAL SPECIFICATIONS (Standard):

Pressure Range (Fluid):

- 30-60 PSIG (2-4 Bar)

Flow Range (Fluid):

- 10-20 GPM (2.3 - 4.5 m³/hr)

Pressure Range (Pneumatic/Air):

- 60-80 PSIG (4.1-5.5 Bar)

Air Consumption Range:

- 60mm: 2.9 in³
- 120mm: 5.8 in³

Materials Of Construction:

- Wetted:
 - 316L SS; EPDM; Carbon Filled PTFE
- Non-Wetted:
 - 301S81 SS; 316SS

Temperature Range:

- 34°-284°F (1°-140°C)

Finish

- ≥ 16 Raμ Inch (0.4 Raμ Meter) As Standard
- Electropolished Finish As Required

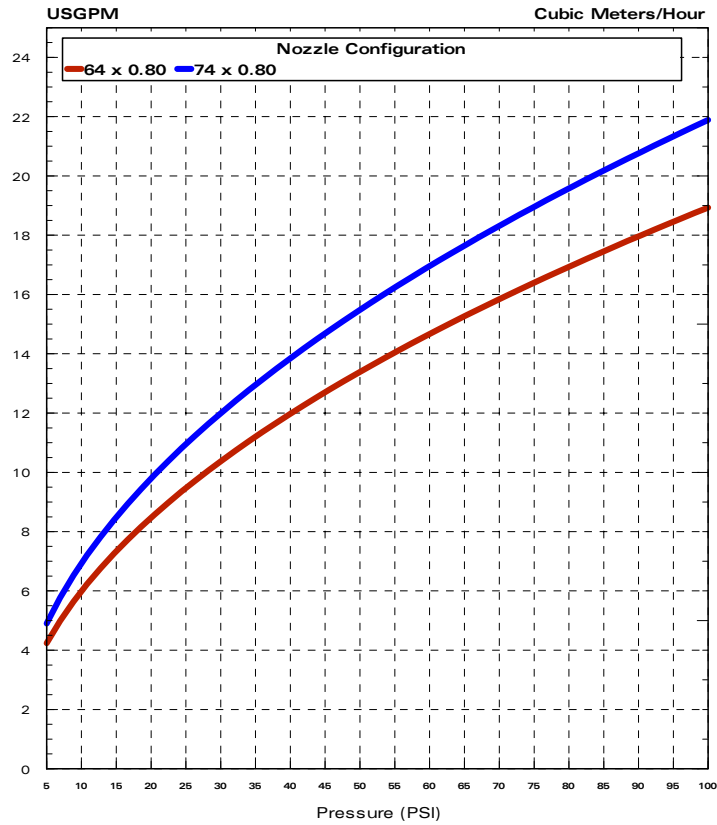
Connections:

- Inlet: See standard product program
- Mount: See standard product program
- Air: 0.125" NPT(M) or 0.125" BSP(F)
- Others on request (specials)

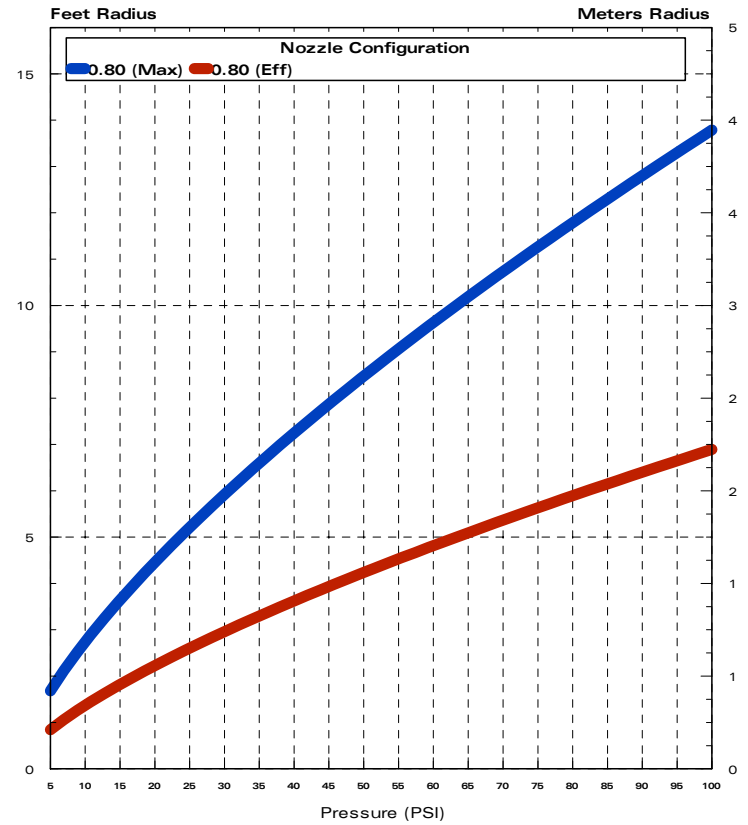
Standard Product Program

Part Number	Inlet Conn. Fluid	Mount Conn.	Travel mm	Air Inlet	Spray Pattern	Drilling
RSB100A-60-01	1.50" Tri-Clamp	2.00" Tri-Clamp	60	.125" NPT(M)	216°	64 x 0.80 mm
RSB100A-60-02	1.50" Tri-Clamp	2.00" Tri-Clamp	60	.125" BSP(F)	216°	64 x 0.80 mm
RSB100A-60-03	1.50" Tri-Clamp	2.00" Tri-Clamp	60	.125" NPT(M)	360°	74 x 0.80 mm
RSB100A-60-04	1.50" Tri-Clamp	2.00" Tri-Clamp	60	.125" BSP(F)	360°	74 x 0.80 mm
RSB100A-120-01	1.50" Tri-Clamp	2.00" Tri-Clamp	120	.125" NPT(M)	216°	64 x 0.80 mm
RSB100A-120-02	1.50" Tri-Clamp	2.00" Tri-Clamp	120	.125" BSP(F)	216°	64 x 0.80 mm
RSB100A-120-03	1.50" Tri-Clamp	2.00" Tri-Clamp	120	.125" NPT(M)	360°	74 x 0.80 mm
RSB100A-120-04	1.50" Tri-Clamp	2.00" Tri-Clamp	120	.125" BSP(F)	360°	74 x 0.80 mm

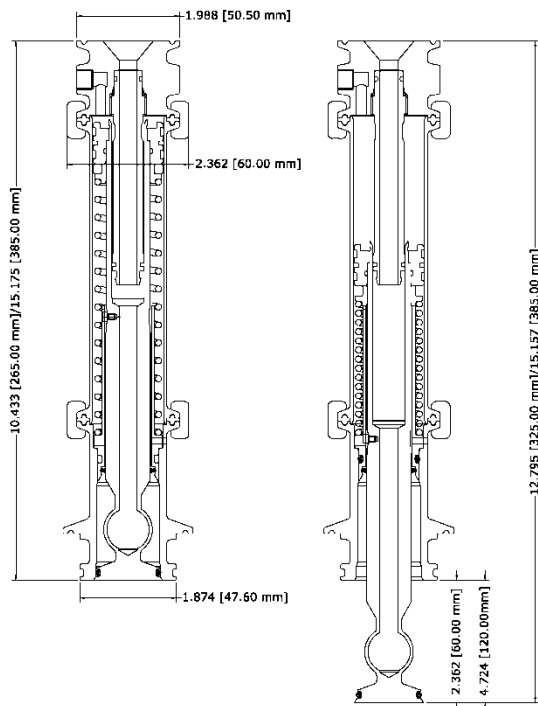
Pressure/Flow Curve



Pressure/Distance Curve



Dimensional Information - "Sealed Unit Shown"



Cut-A-Way View



Distributed and Serviced by...
 Tank Cleaning Technologies, Inc.
 15200 Middlebrook Drive, Suite E
 Houston, Texas 77058 - USA
 Phone: +1 281.480.4041
 Fax: +1 713.516.5883
 Email: sales@tankcleantech.com

www.tankcleantech.com

Stocking Locations in USA, Canada and Mexico